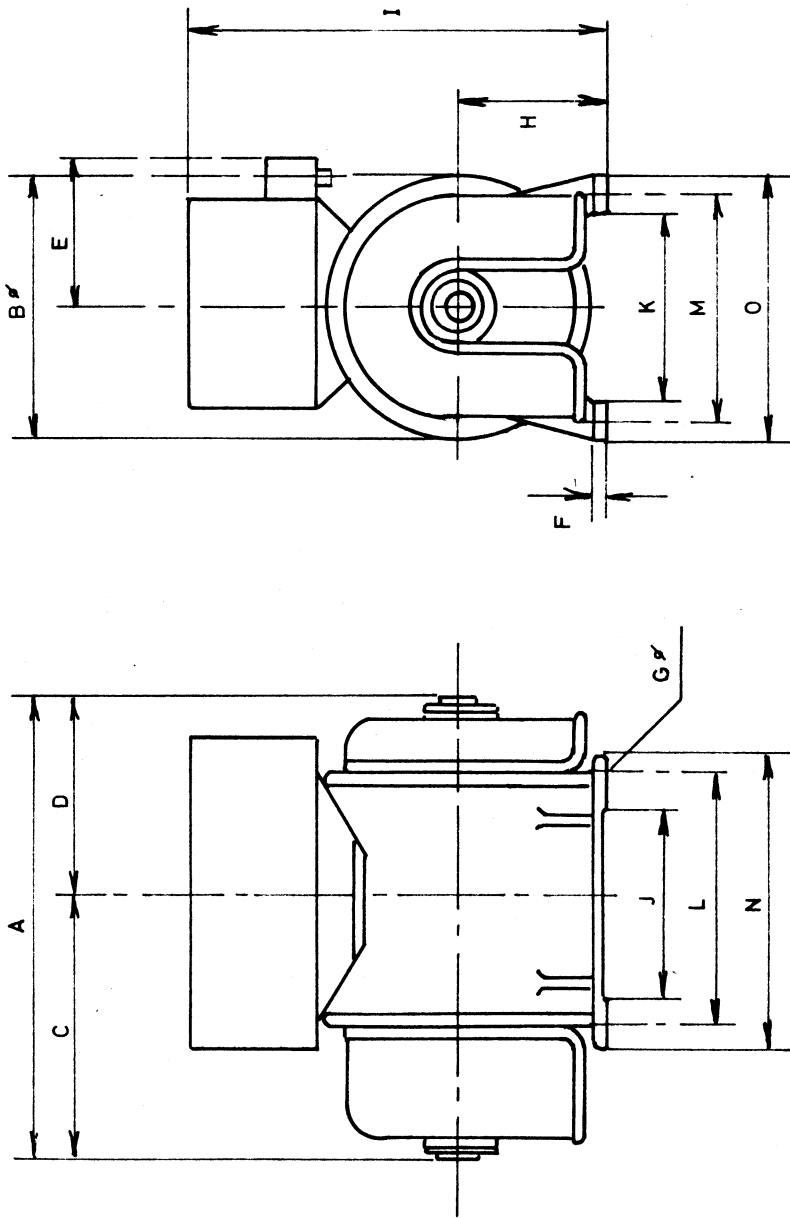


Diagram of connection for single armature converter type EOKN 25 with noise filter and start relays

Input : 220 Volts - DC 3000 r.p.m 3,7 A
 Output 1: 25 Volts - DC 100 Watt 4 A
 Output 2: 700 Volts - DC 400 Watt 570mA

Pos.	pc.	Designation	Type or quality	Remarks
1	2	Startresistor	DZSA 100/24,10% 20 ohm	Steatit-Magnesia
2	2	Series resistor	B83003 5% 4,7 k ohm	Philips
3	2	Starting relay	110 Volts	Kuhnke
4	6	Filter coils	30x33	Transmotor
5	2	Condensers	0,1 mF 400WV/DC T:0A	TIK
6	2	Condensers	0,1mF 1000WV/DC T:0A	TIK
7	1	Condensers	2mF 1000WV/DC T:OK	TIK
8	2	Condensers	Type: P-74-U	TIK
9	1	Carbon brushes	8x12,5x19 B99	
10	1	Carbon brushes	5x6,5x16 B99	
11	1	Carbon brushes	8x10x16 F1	
12	1	Terminal strips	8 x SAK 2,5	Weidmüller

INGENIØRFIRMAET M. P. PEDERSEN	DIAGRAM FOR CONVERTER WITH NOISE FILTER AND START REL.	EOKN - 25.	Tegn. af	Arkiv	Map.	Dato	Tegn.
			EL. BW	TRANSMOTOR		1.7.66	NOS-247



TRANSMOTOR: MÅLSKITSE

INGENIØRFIRMAET
M. P. PEDERSEN

OMFORMER: EONV
MED STØJFILTER

Tegn. af Arkiv Map. Dato
Sim. Transmotor Marts 1968

Tegn. NO M-4331

TYPE:	A	B	C	D	E	F	G	H	I	J	K	L	M	N	O	P	R	Wt. kg
EON-20-22	352	212	198	154	128	13	12	116	357	100	150	160	190	200	230			32-37
EONV-22s. EOK 22	396	212	198	198	128	13	12	116	357	100	150	160	190	200	230			
EOKN-25	478	230	259	219	129	16	12	121	357	140	170	200	210	240	250			
EONV-45	512	230	256	256	129	16	12	121	357	140	170	200	210	240	250			