

ZODIAC

Filter-unit FU-72311

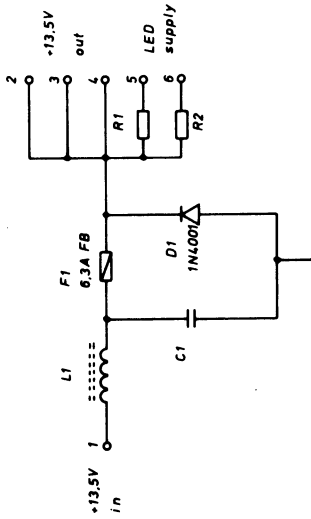
The supply voltage of 13.5 V is sent through a filter before it is applied to the different units.

The filter consists of a coil L1, a capacitor C1, which removes transients and noise.

The diode D1 protects against destruction of the unit by wrong polarization of the supply voltage. R1 and R2 are dropping resistors to the LED's which indicates "Power", respectively "Transmit".

This document must not be copied, reprinted or disclosed to any third party, either wholly or in part, without our consent. Any infringement will lead to legal proceedings.

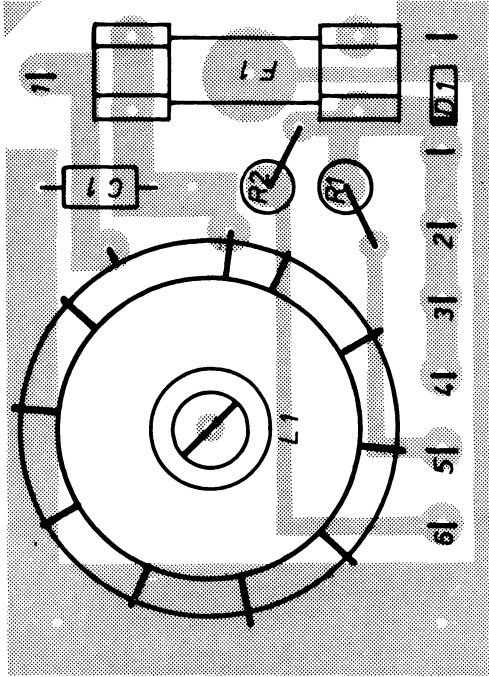
ZODIAC-COMMUNICATIONS APS, DENMARK



ZODIAC-COMMUNICATIONS	
Filter Unit FU-72311 Dwg.no. 72311-2	

This document must not be copied, reprinted or disclosed to any third party, either wholly or in part, without our consent. Any infringement will lead to legal proceedings.

ZODIAC-COMMUNICATIONS APS, DENMARK



ZODIAC-COMMUNICATIONS

Filter Unit
FU-72311
Dwg. no. 72311-2

Component List

Filter Unit - FU-72311

<u>Ckt. Symbol</u>	<u>Description</u>	<u>Value or type</u>
D1	Diode	1N4001
R1	Resistor	680 ohm/1/4 W
R2	-	680 - -
C1	Capacitor	330 nf-polyester