

# ZODIAC

---

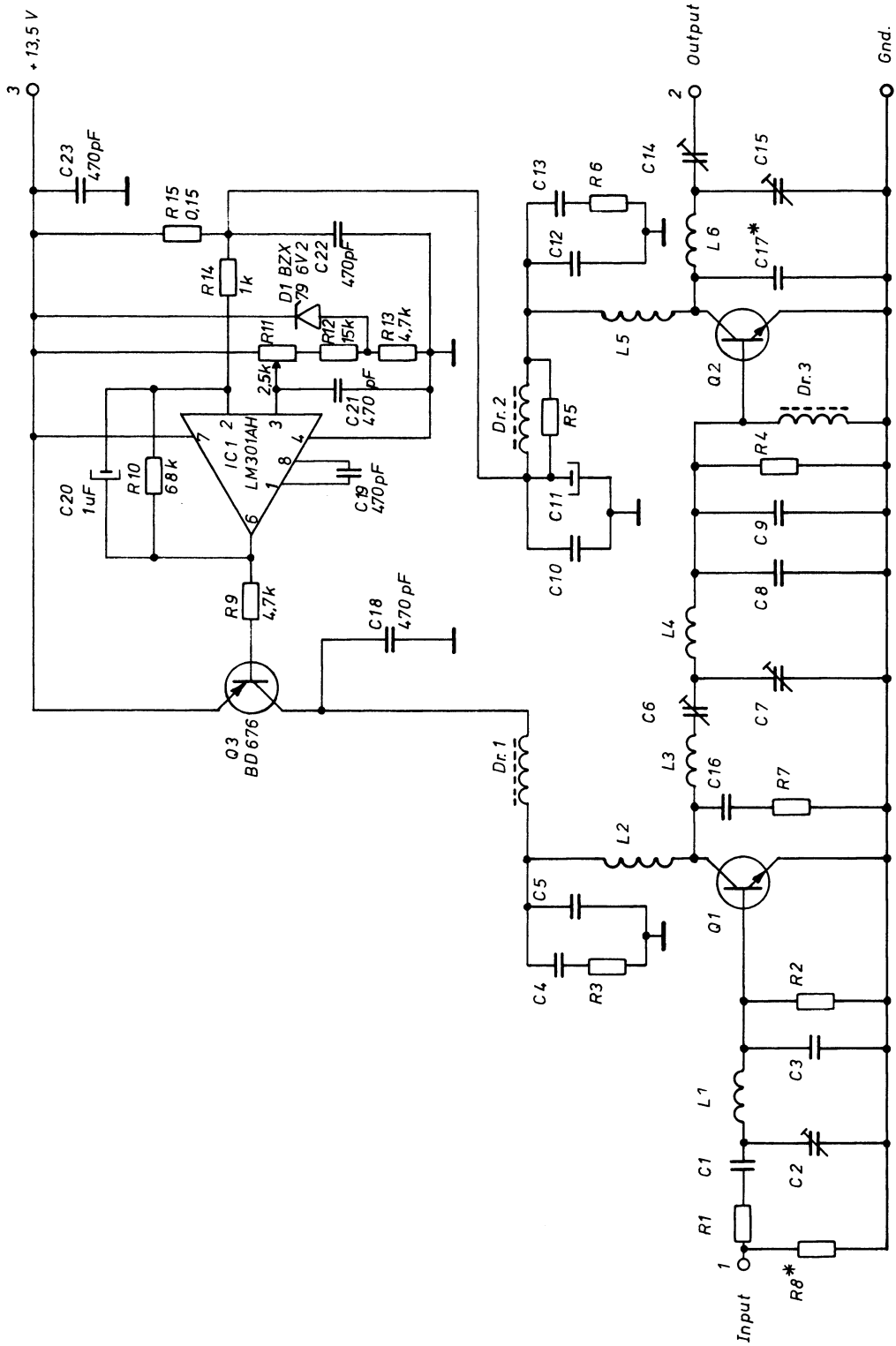
## PA-7235

With the RLC-combination at the input of the PA-unit an impedance matching and isolation is obtained. Further it is obtained that the signal from the driver-stage is reduced to 0.5 W.

The signal is amplified by the transistor Q1 and is led to transistor Q2 by a tuned impedance matching network. In transistor Q2 the signal is amplified to a power of 25 W and is matched to an impedance of 50 ohm by means of a LC-network.

The transistors Q1 and Q2 are NPN-silicium-power-transistors which are placed on a heat sink. By means of a NTC-resistor the temperature of the heat sink is measured, and if overheating, the drive is regulated down in DR-7236 (see this).

The transistor Q2 can withstand all loads between open and short circuit in the normal voltage range.



\* only used in 4-meter version

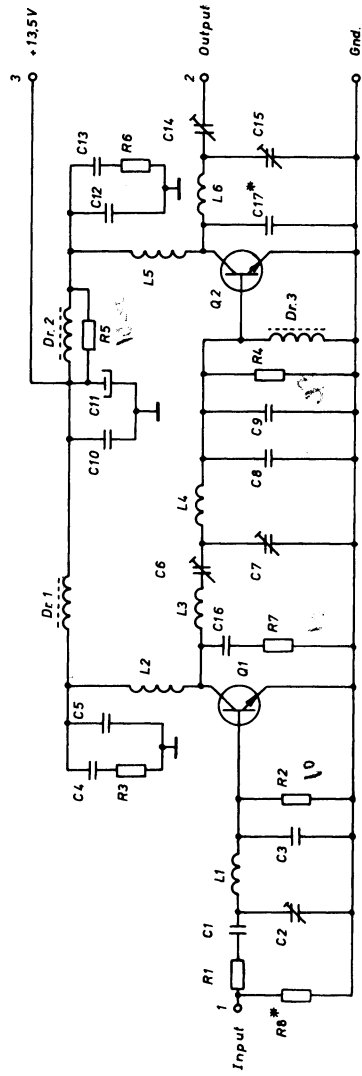
ZODIAC

Power Amplifier 25W  
PA 7235 / A

Tegning nr.: 9600401

This document must not be copied, reprinted or disclosed to any third party, either wholly or in part, without our consent. Any infringement will lead to legal proceedings.

ZODIAC-COMMUNICATIONS APS, DENMARK



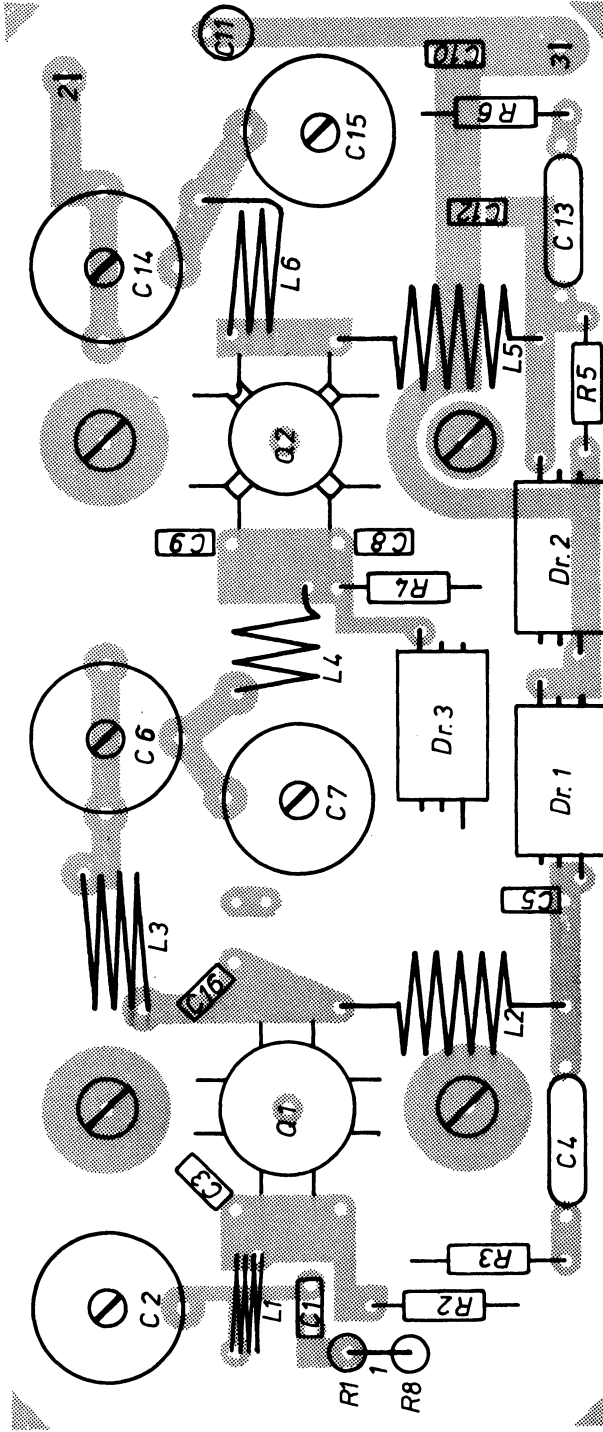
\* only used in 4-meter version

**ZODIAC-COMMUNICATIONS**

Power Amplifier  
 PA-7235 (1/4)  
 Dwg. no. 7235-3

This document must not be copied, reprinted or disclosed to any third party, either wholly or in part, without our consent. Any infringement will lead to legal proceedings.

ZODIAC-COMMUNICATIONS APS, DENMARK



**ZODIAC-COMMUNICATIONS**

Power Amplifier  
PA-7235 (1/4)  
Dwg. no. 7235-3

Component List

Power Amplifier - PA-7235

<u>Ckt. Symbol</u>	<u>Description</u>	<u>Value or type</u>
Q1	Transistor	BLY87A-Philips
Q2	-	B25-12-CTC
R1	Resistor	10 ohm/1/8 W
R2	-	10 -
R3	-	10 -
R4	-	47 -
R5	-	10 -
R6	-	10 -
C1	Capacitor	22 pf-ceramic
C2	Trimmer	60 pf
C3	Capacitor	47 pf-ceramic
C4	-	0,1 uF
C5	-	100 pf-ceramic
C6	Trimmer	60 pf
C7	-	60 pf
C8	Capacitor	100 pf-ceramic
C9	-	100 pf-ceramic
C10	-	4,7nf-ceramic
C11	-	22 uF/16V-tantal
C12	-	100 pf-ceramic
C13	-	0,1 uF
C14	Trimmer	60 pf
C15	-	60 pf
DR1	RF-choke	4,5 uH
DR2	-	4,5 uH
DR3	-	4,5 uH
R7	Resistor	10 ohm
C16	Capacitor	4,7pF

Power Amplifier - PA - 7235/4

<u>Ckt. Symbol</u>	<u>Description</u>	<u>Value or Type</u>
Q1	Transistor	BLY 87 A - Philips
Q2	-	B 25 - 12 - CTC
R1	Resistor	47 Ohm 1/8 W ( selected )
R2	-	10 Ohm -
R3	-	10 Ohm -
R4	-	47 Ohm -
R5	-	10 Ohm -
R6	-	10 Ohm -
R7	-	10 Ohm -
R8	-	100 Ohm -
C1	Capacitor	15 pf - ceramic
C2	Trimmer	60 pf
C3	Capacitor	47 pf - ceramic
C4	-	100 nf
C5	-	220 pf - ceramic
C6	Trimmer	60 pf
C7	-	60 pf
C8	Capacitor	47 pf - ceramic
C9	-	47 pf - ceramic
C10	-	4,7 nf - ceramic
C11	-	22 $\mu$ f/16 V - tantal
C12	-	220 pf - ceramic
C13	-	100 nf
C14	Trimmer	60 pf
C15	-	60 pf
C16	Capacitor	10 pf - ceramic
C17	-	47 pf - ceramic
DR1	RF-choke	4,5 $\mu$ H
DR2	-	4,5 $\mu$ H
DR3	-	4,5 $\mu$ H