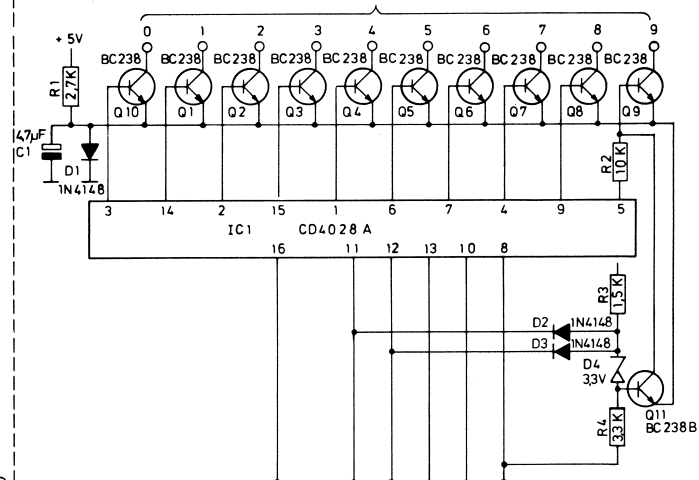
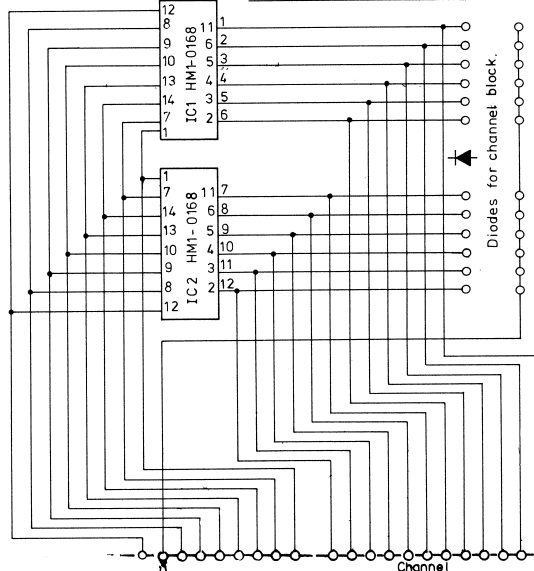


D02 A1 Print board for diodematrices with diodes for channel block.

Tonedecoder, C 23 A1

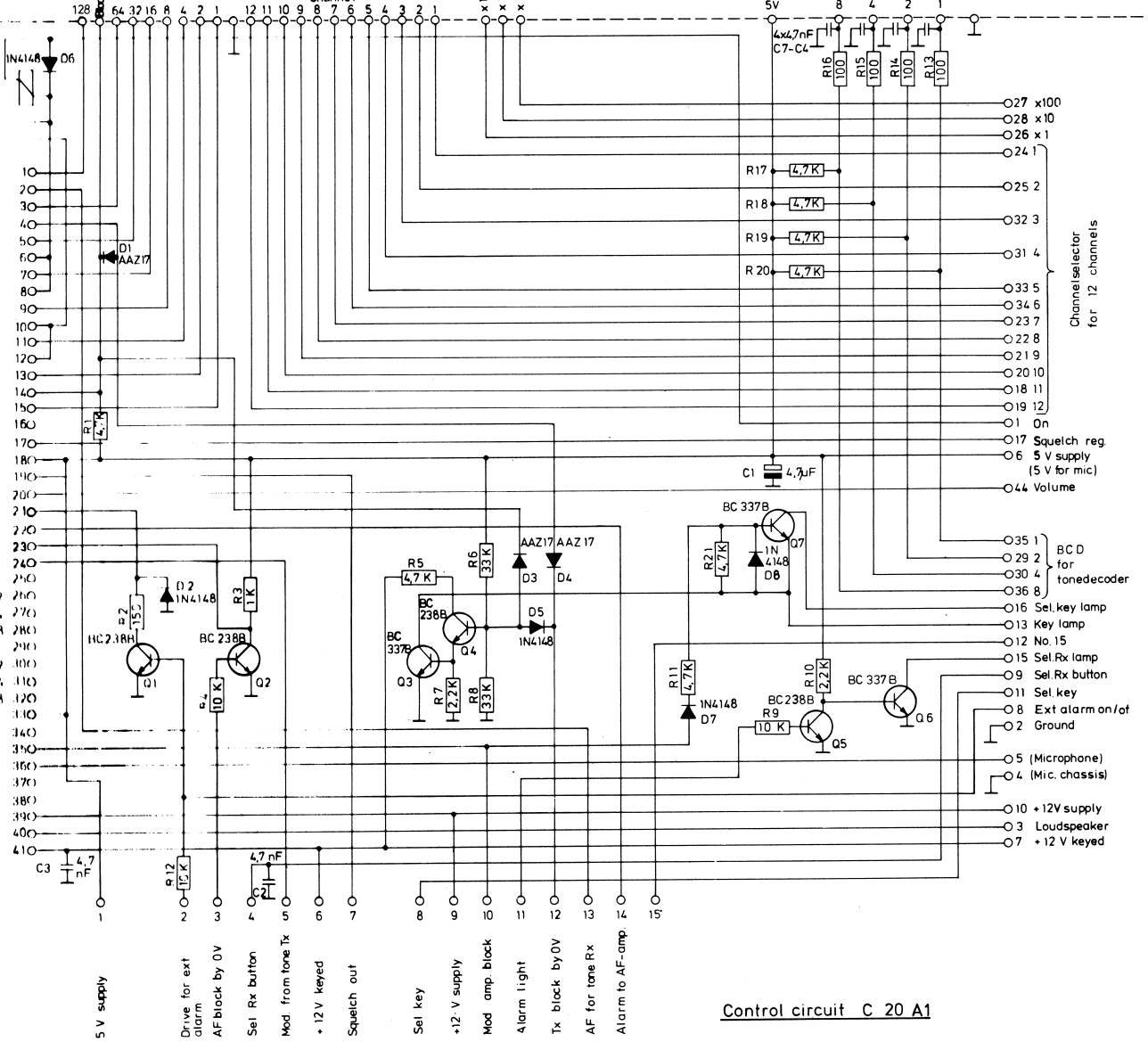
Connected to tapped coil



On/off relay
Rel

- 128 AF for tone Rx
- 64 Tx block by 0V
- 32 Main switch
- 16 Main switch
- 8 Main switch
- 4 Main switch
- 2 Rx blocked by 0V
- 1 5 V keyed
- 170 Squelch reg
- 180 5 V supply
- 190 Squelch out
- 200 Volume reg.
- 210 Fxt alarm
- 220 Alarm to AF
- 230 AF block
- 240 Mod. from tone Tx

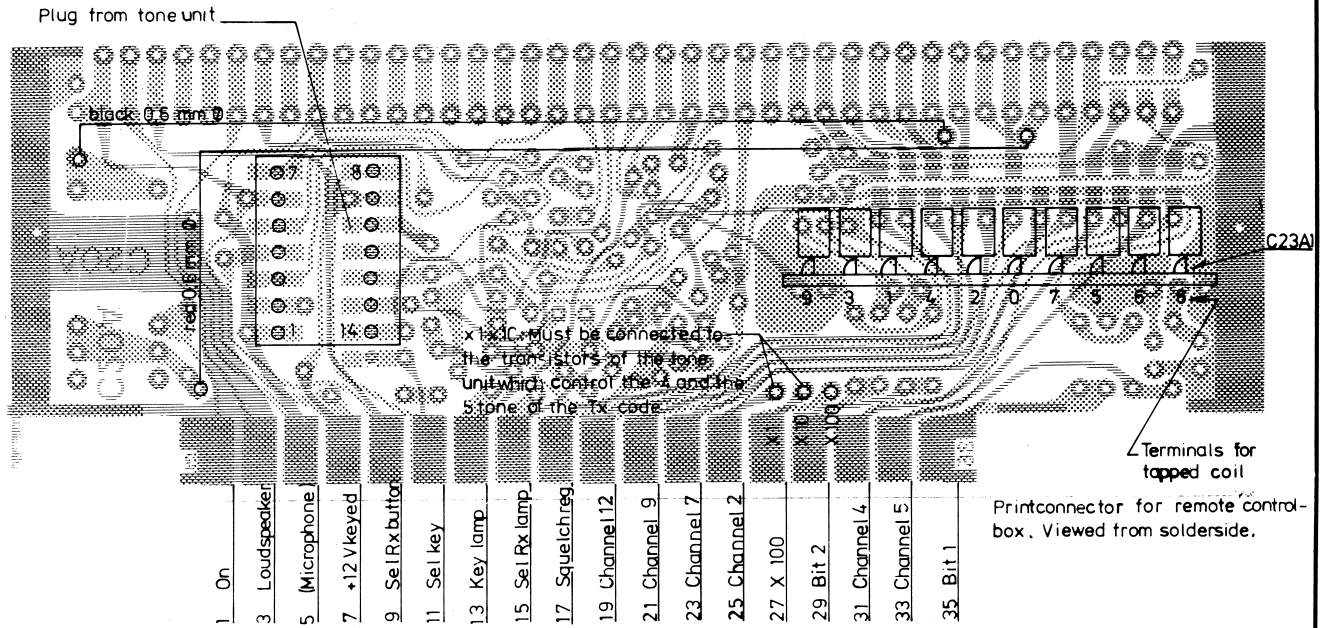
- 1 250 "Units"
- 2 260 "Units"
- 4 270 "Units"
- 8 280 "Units"
- 1 290 "Units"
- 2 300 "Units"
- 4 310 "Units"
- 8 320 "Units"
- 1 330 "Units"
- 2 340 "Units"
- 4 350 "Units"
- 8 360 "Units"
- 1 370 "Units"
- 2 380 "Units"
- 4 390 "Units"
- 8 400 "Units"
- 1 410 "Units"



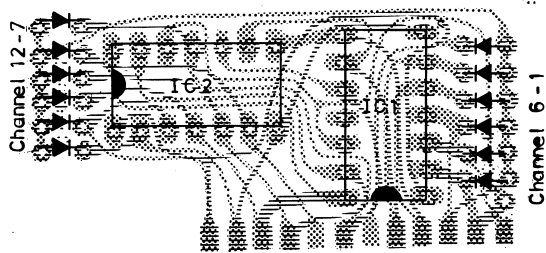
Control circuit C 20 A1

Front section	Print boards
48F	C20A1/D02A1

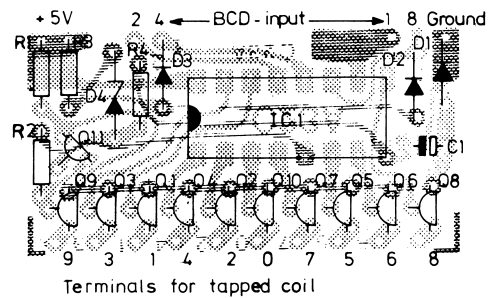
Rettet:	Control circuit for 12 channel remote controlbox, Print boards C 20A1/ D02A1/ C 23 A1	Tegn.: 23-2-81BC	Kontr.: 23-2-81 Bu
		Stykl. nr.:	
	AP-RADIOTELEFON 4/6	Tegn. nr.:	81036 - 2E2



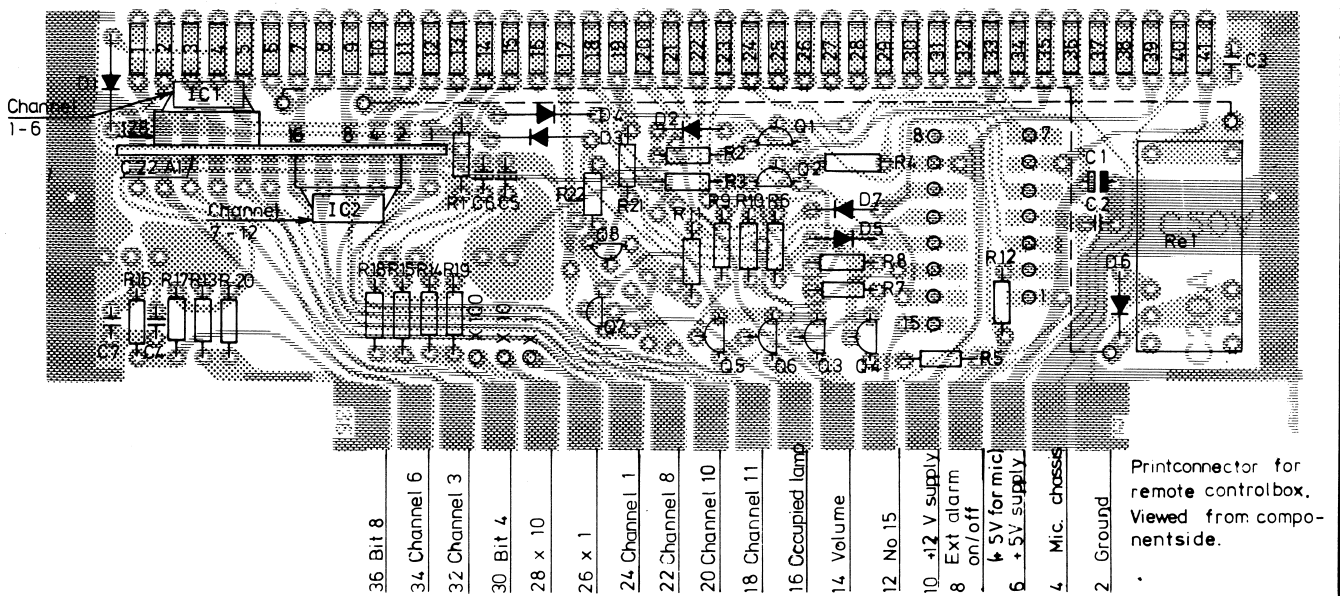
Printboard for D 02



Tonedecoder C 23 A1



Control circuit with indication for sel. key C 20 A



Retter:	Control circuit with occupied indication for 12 channel remote controlbox.	Tegn.:	Kontr.:
	Print boards C 20 A1 / D02A1 / C 23 A1	Stykl. nr.:	15-2-79 LD
	AP - RADIOTELEFON	Tegn. nr.:	81036 - 3E2