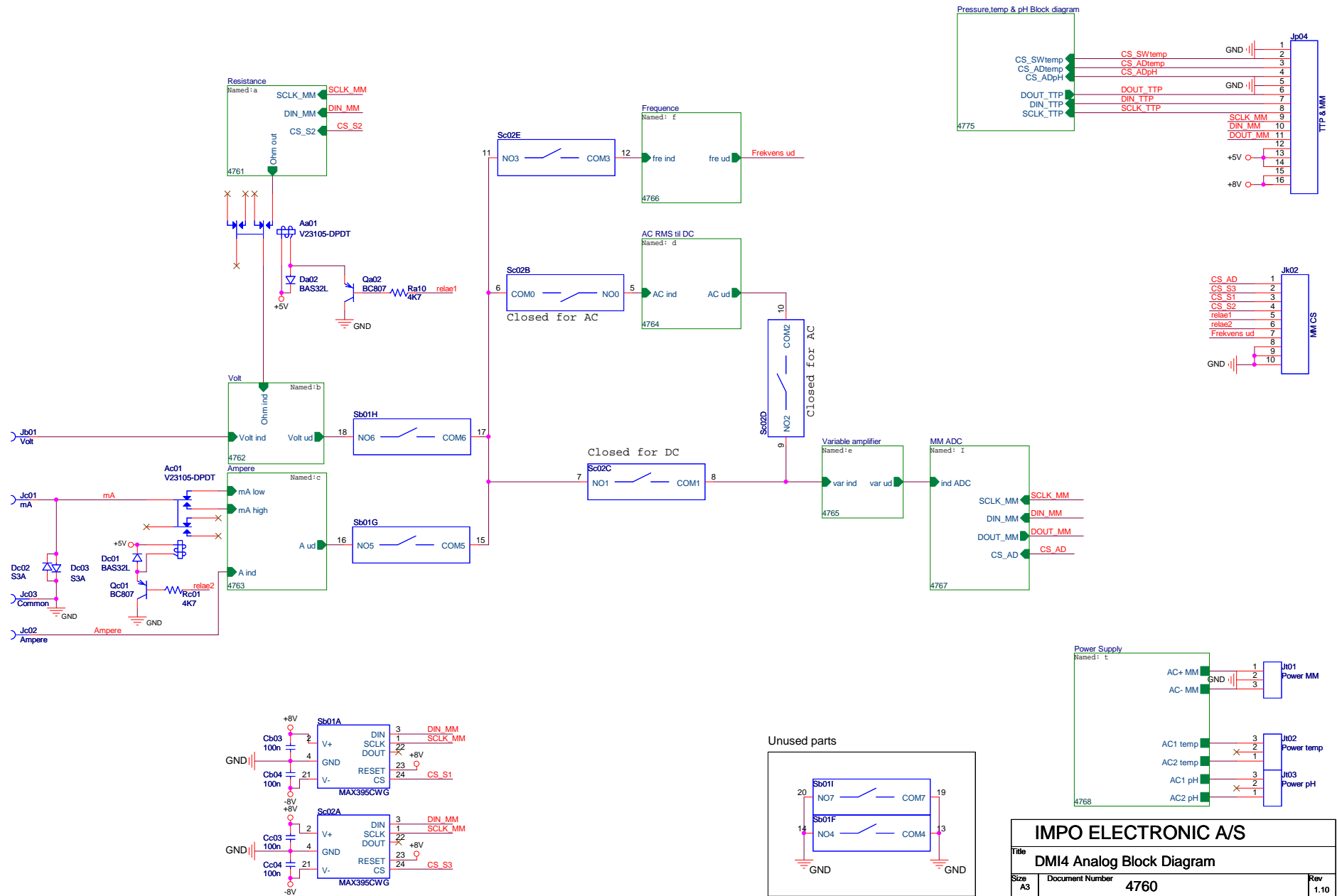
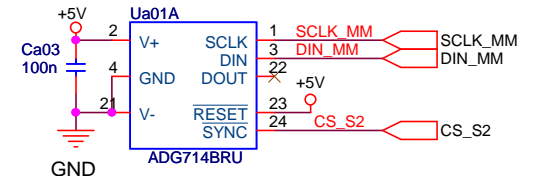
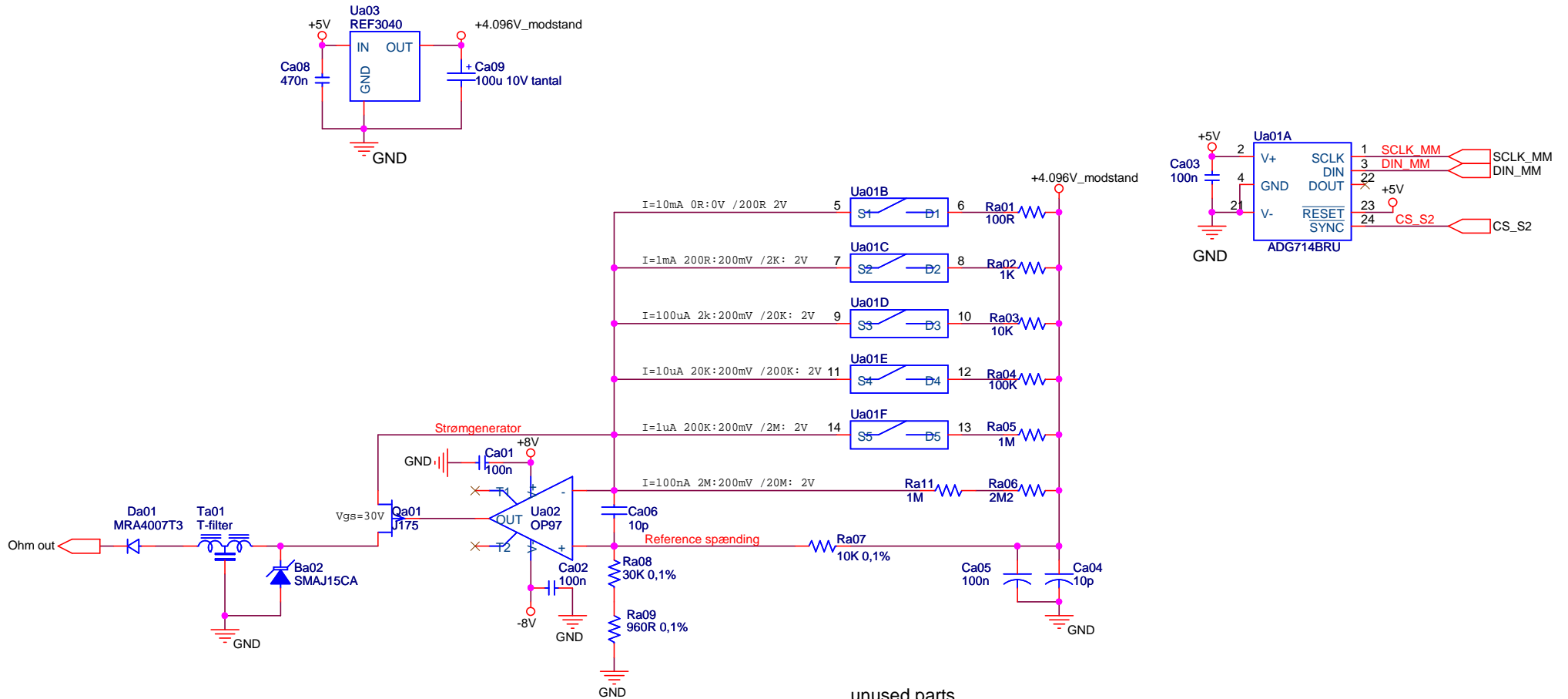


# Block Diagram Analog

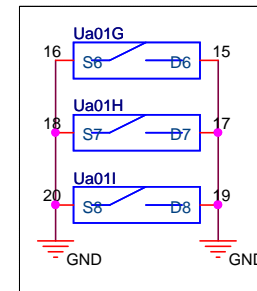


<b>IMPO ELECTRONIC A/S</b>			
<b>Title DMI4 Analog Block Diagram</b>			
Size A3	Document Number 4760	Rev 1.10	
Date: Friday, January 14, 2005	Sheet 2	of 19	

# Resistance

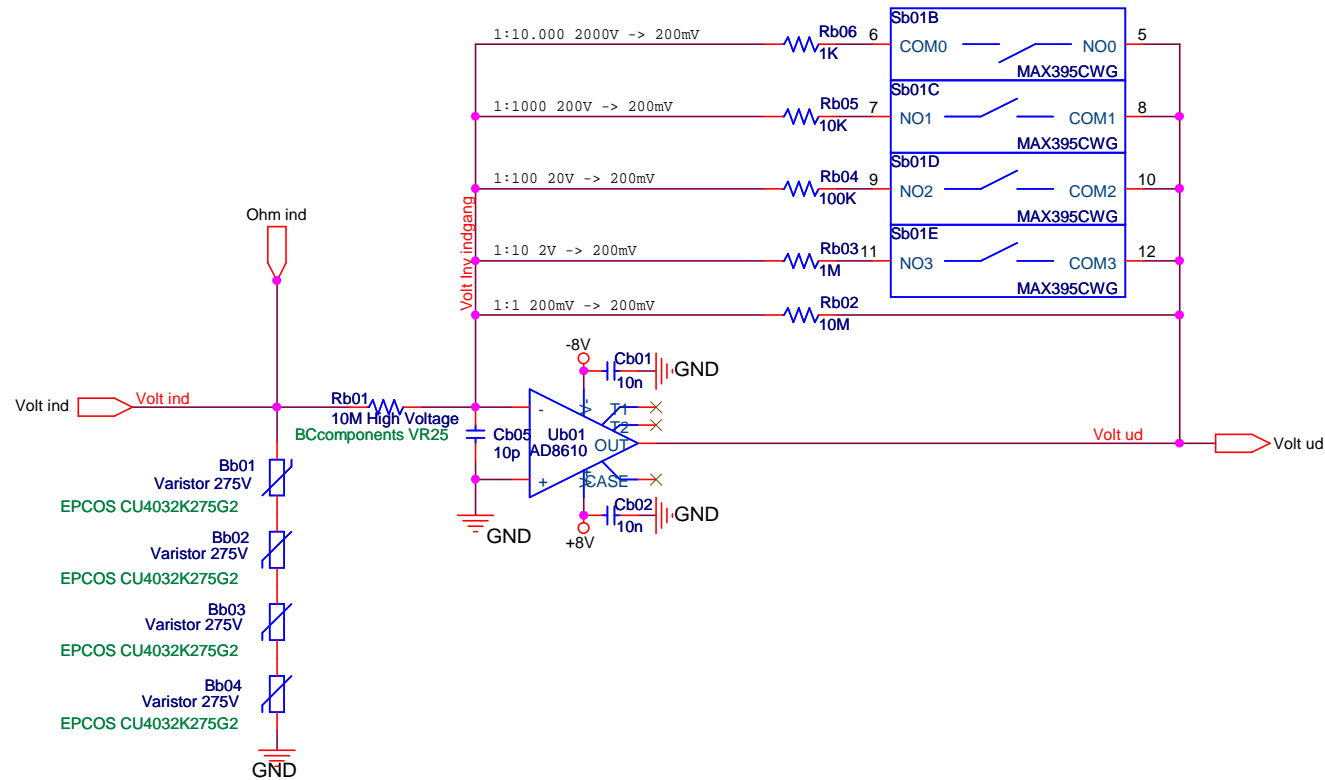


## unused parts



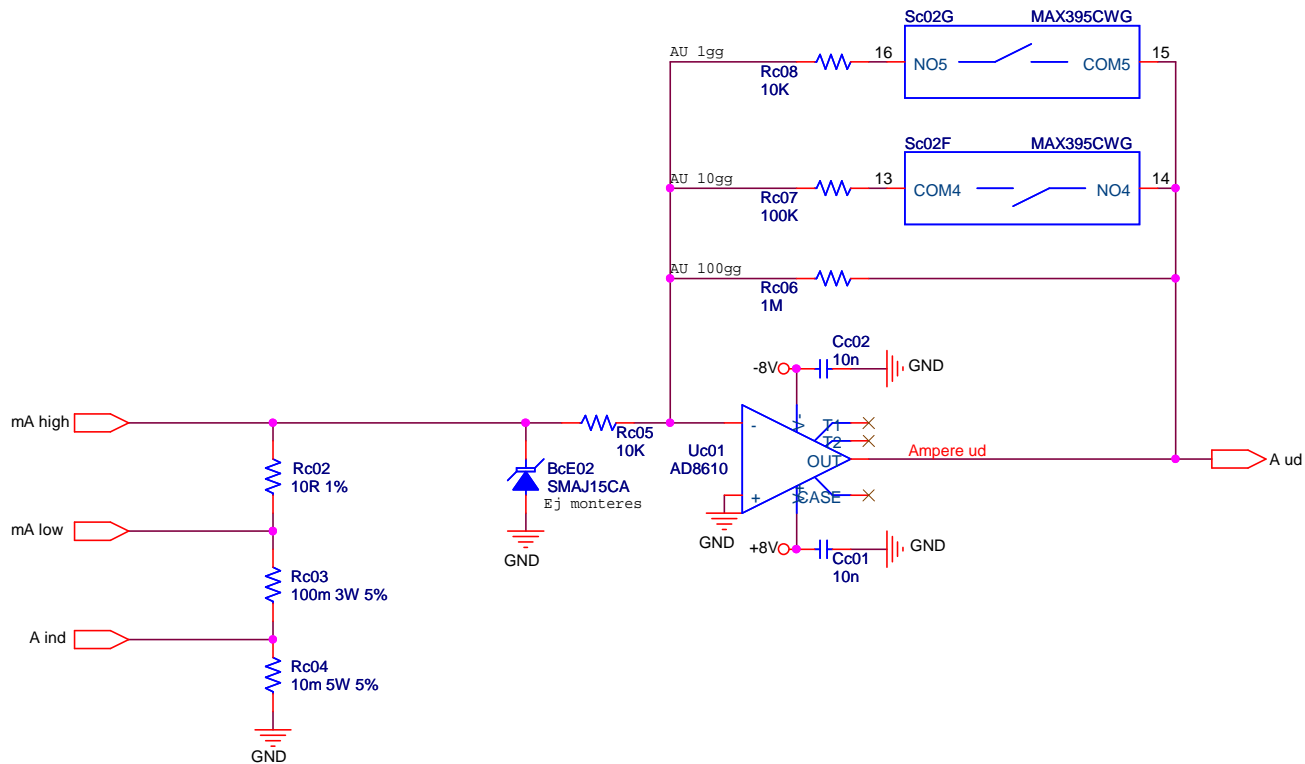
<b>IMPO ELECTRONIC A/S</b>		
Title <b>DMI4 Resistance</b>		
Size A4	Document Number <b>4761</b>	Rev 1.10
Date:	Friday, January 14, 2005	Sheet 3 of 19

# Volt



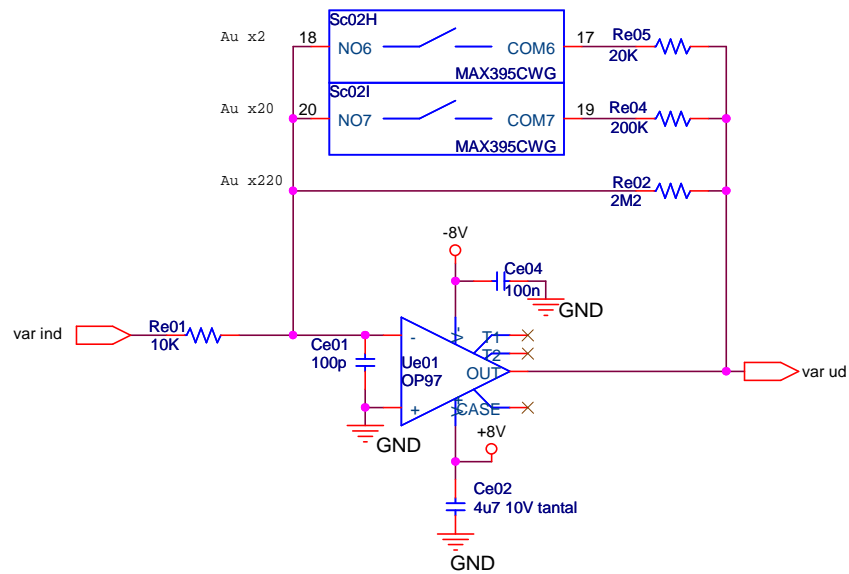
IMPO ELECTRONIC A/S		
Title DMI4 Volt		
Size A4	Document Number 4762	Rev 1.10
Date: Friday, January 14, 2005	Sheet 4	of 19

# Ampere



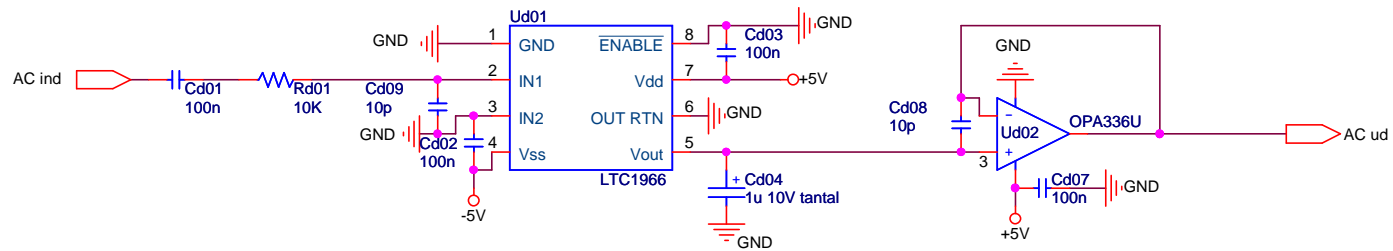
<b>IMPO ELECTRONIC A/S</b>		
Title <b>DMI4 Ampere</b>		
Size A4	Document Number <b>4763</b>	Rev 1.10
Date: <b>Friday, January 14, 2005</b>		Sheet <b>5</b> of <b>19</b>

# Variable Amplifier



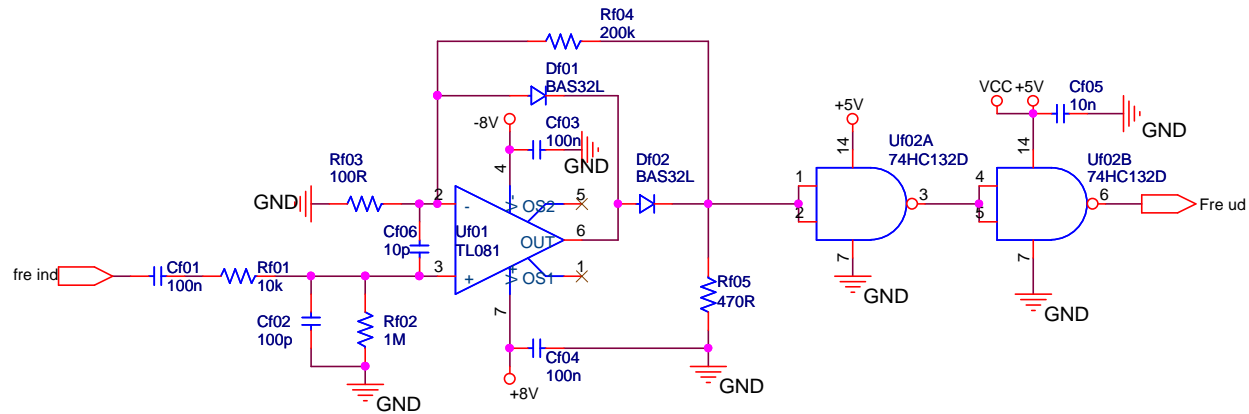
IMPO ELECTRONIC A/S		
Title DMI4 variabel forstærker		
Size A4	Document Number 4765	Rev 1.10
Date: Friday, January 14, 2005	Sheet 6	of 19

# AC RMS to DC

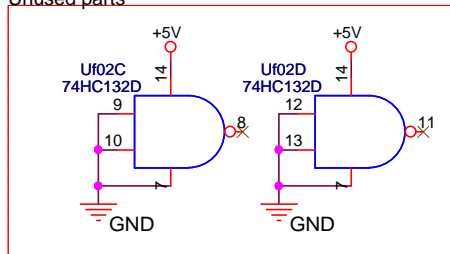


IMPO ELECTRONIC A/S		
Title DMI4 AC RMS til DC		
Size A4	Document Number 4764	Rev 1.10
Date: Friday, January 14, 2005		
Sheet 7 of 19		

# Frequency

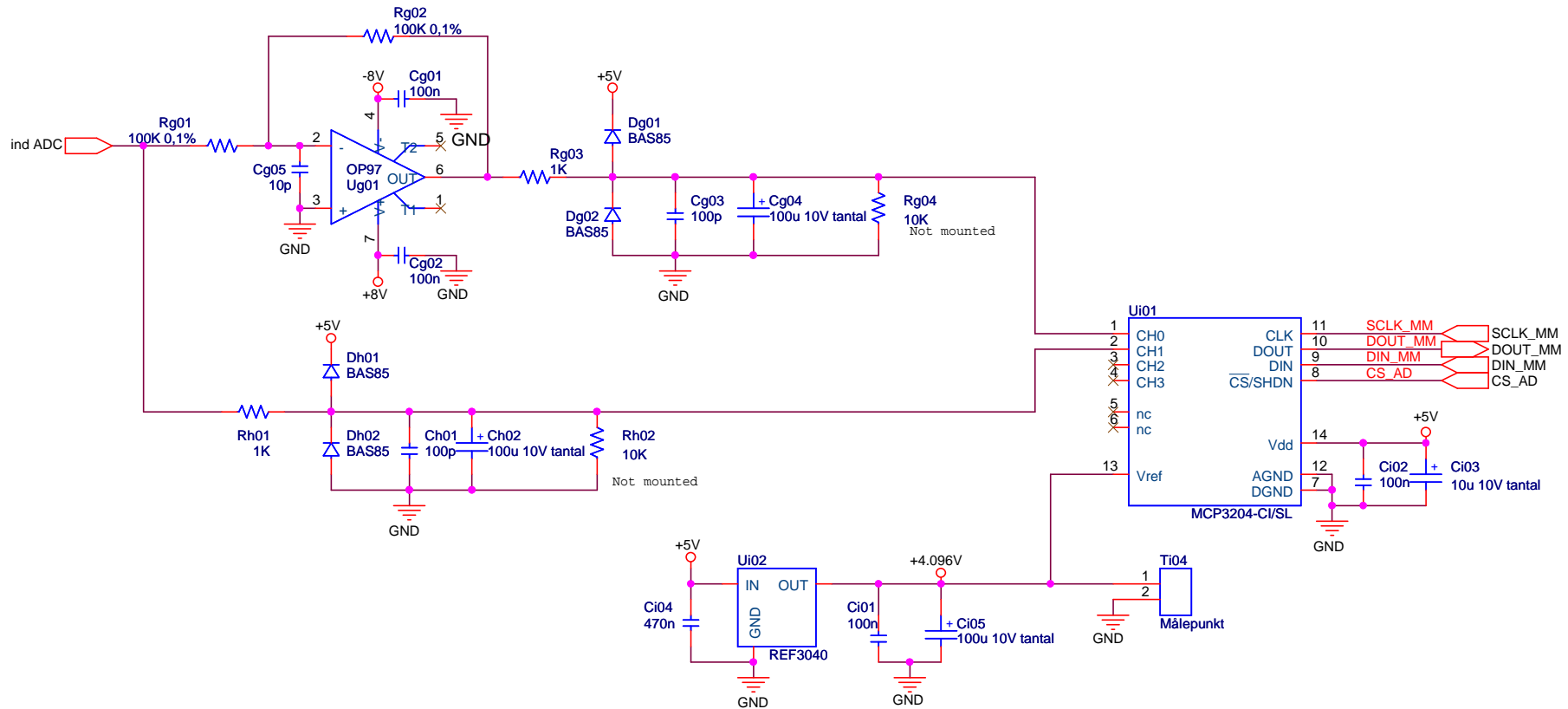


Unused parts



<b>IMPO ELECTRONIC A/S</b>		
Title <b>DMI4 Frequence</b>		
Size A4	Document Number <b>4766</b>	Rev 1.10
Date:	Friday, January 14, 2005	Sheet 8 of 19

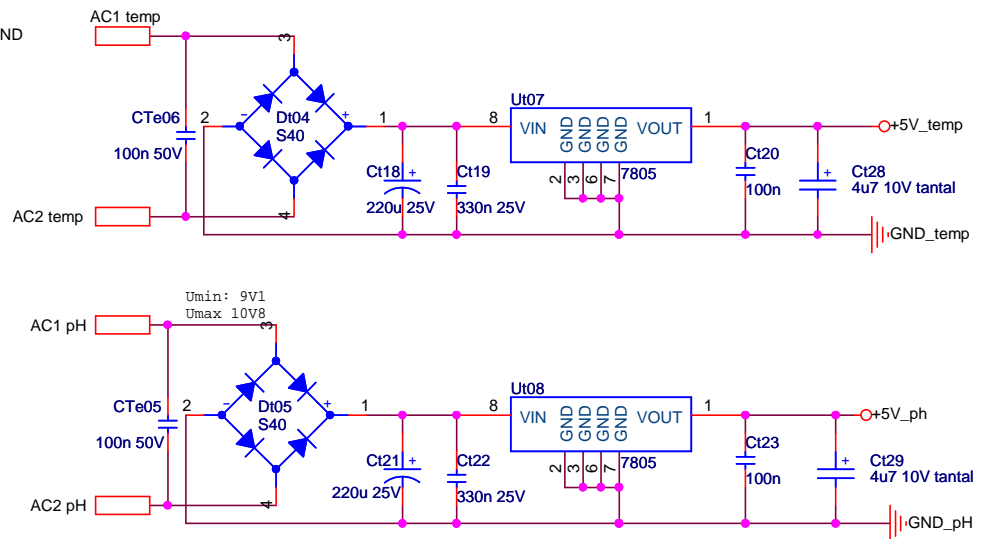
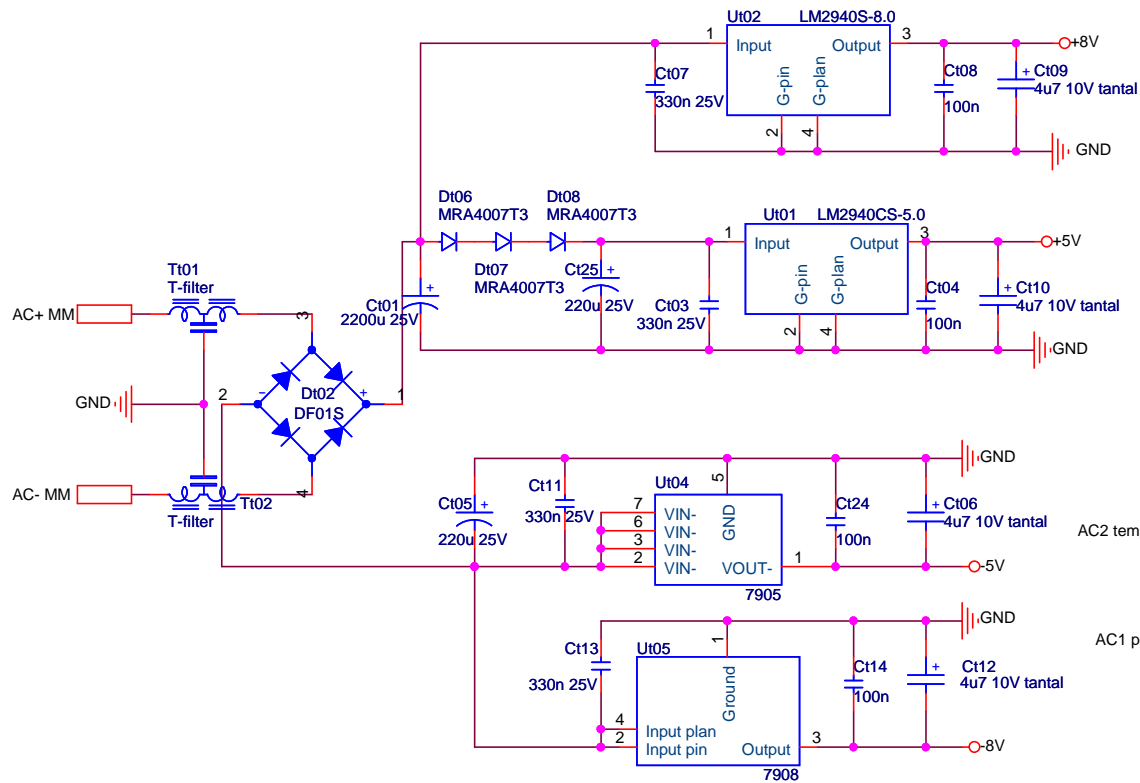
# MM ADC



IMPO Electronic A/S		
Title <b>DMI4 MM ADC</b>		
Size A4	Document Number <b>4767</b>	Rev 1.10
Date:	Friday, January 14, 2005	Sheet 9 of 19

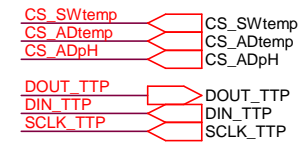
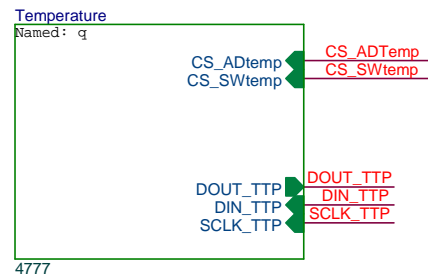
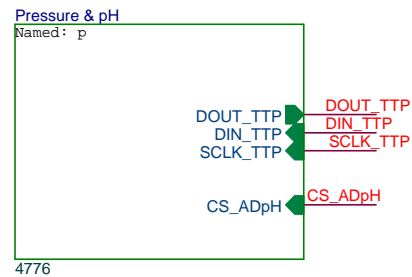


# Power supply



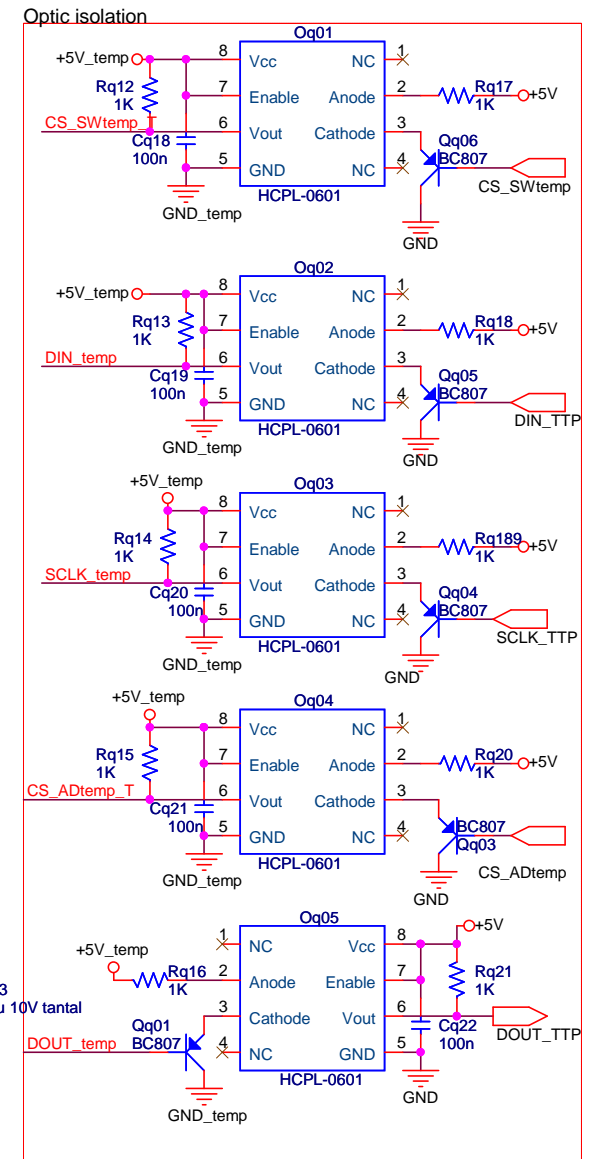
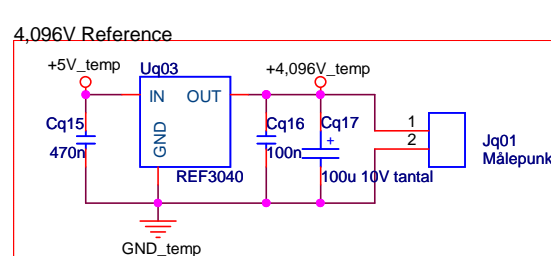
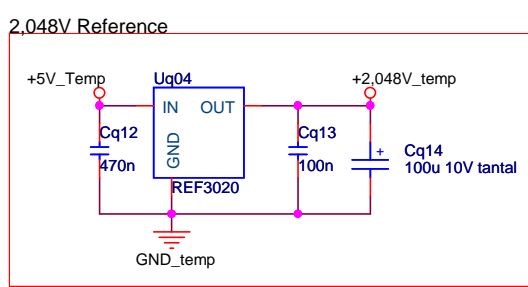
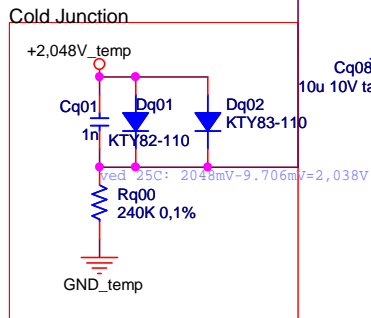
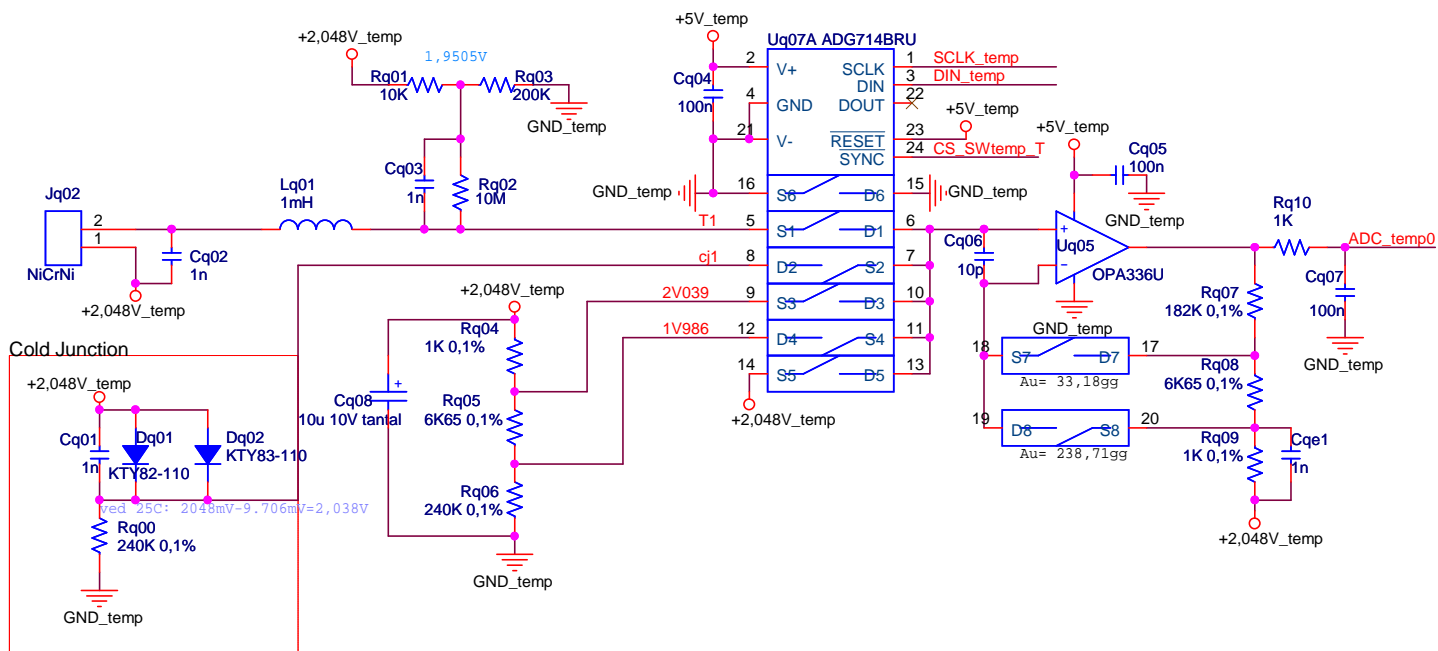
<b>IMPO ELECTRONIC A/S</b>		
Title <b>DMI4 Power Supply</b>		
Size A4	Document Number <b>4768</b>	Rev 1.10
Date: Friday, January 14, 2005	Sheet 10	of 19

# Temp, pres & pH Block Diagram



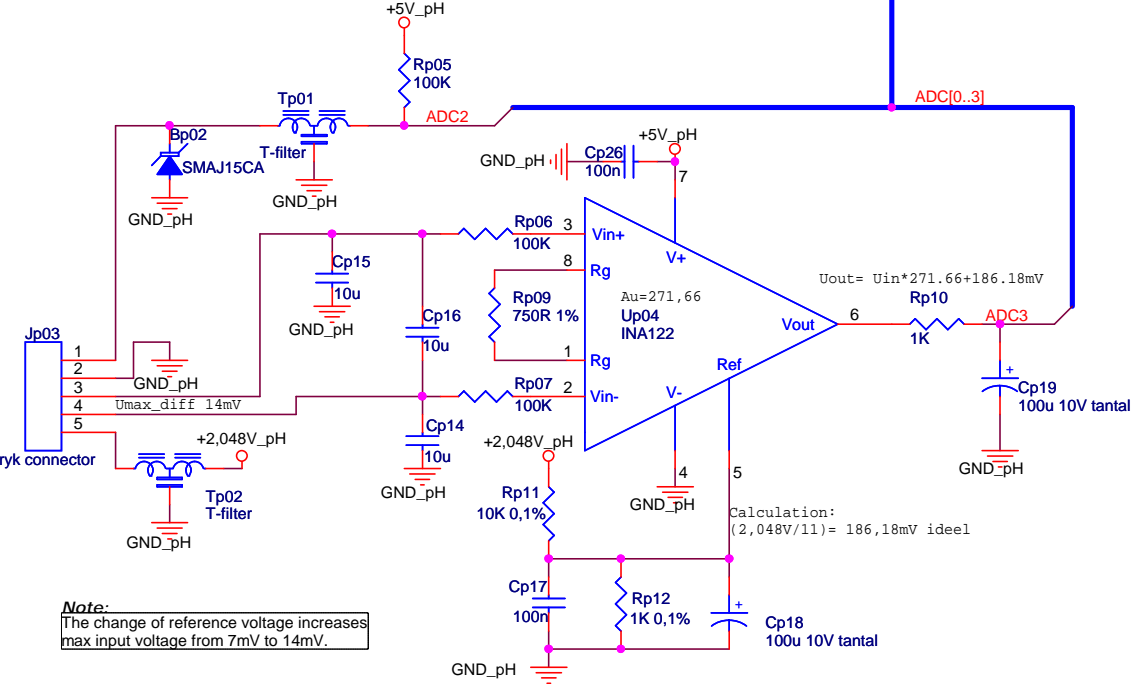
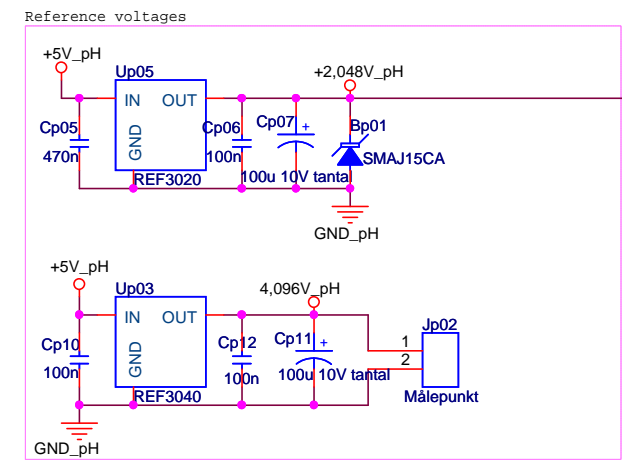
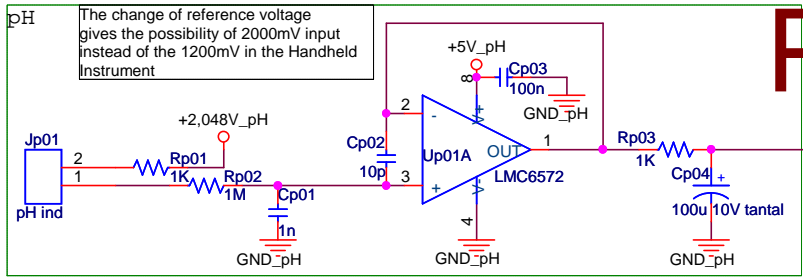
<b>IMPO ELECTRONIC A/S</b>		
Title <b>DMI4 Pressure, pH &amp; Temperature</b>		
Size A4	Document Number <b>4775</b>	Rev 1.10
Date: Friday, January 14, 2005	Sheet 11	of 19

# Temperature

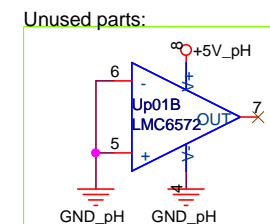
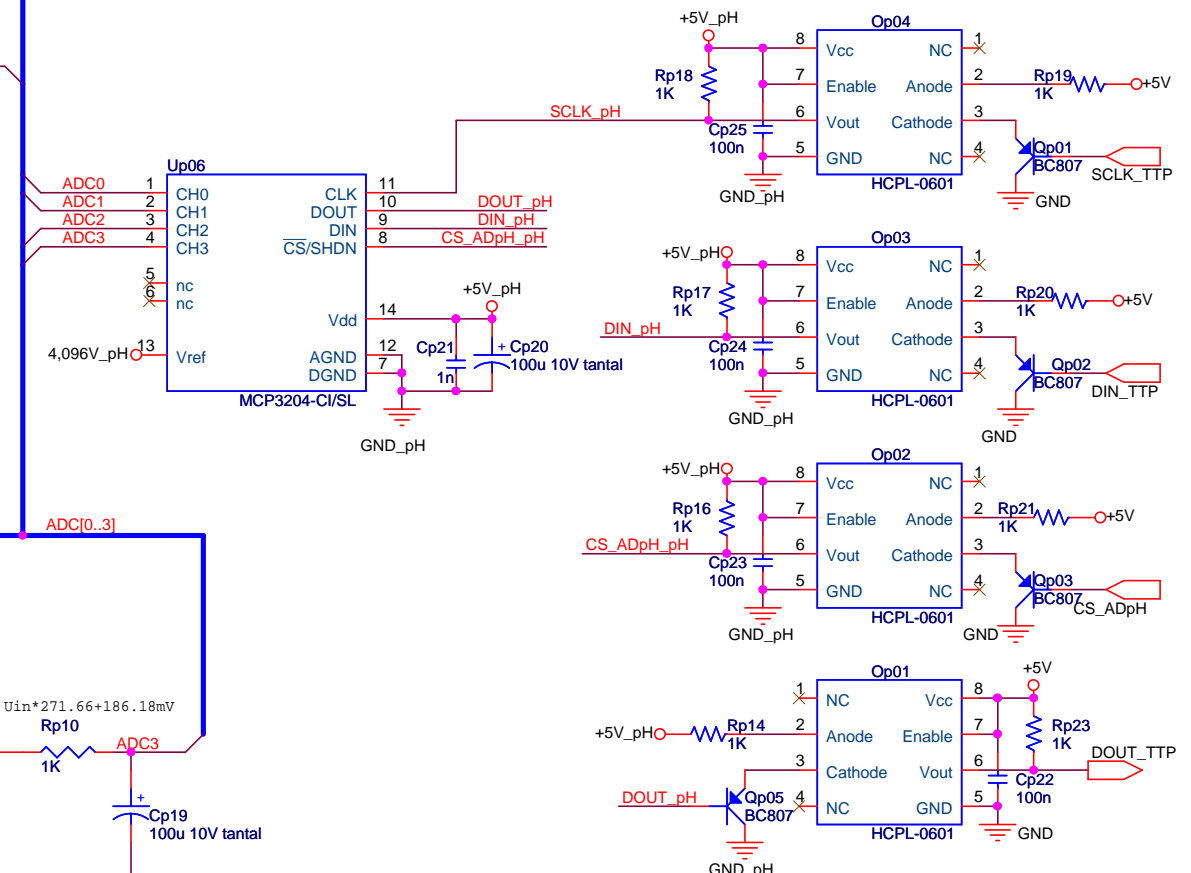


<b>IMPO ELECTRONIC A/S</b>		
<b>Title</b> DMI4 temperature		
Size A4	Document Number <b>4777</b>	Rev 1.10
Date: Friday, January 14, 2005	Sheet 12	of 19

# Pressure & pH



**Note:**  
The change of reference voltage increases max input voltage from 7mV to 14mV.



<b>IMPO ELECTRONIC A/S</b>		
<b>Title</b> DMI4 pH & Pressure		
Size A4	Document Number <b>4776</b>	Rev 1.10
Date: Friday, January 14, 2005	Sheet 13	of 19