



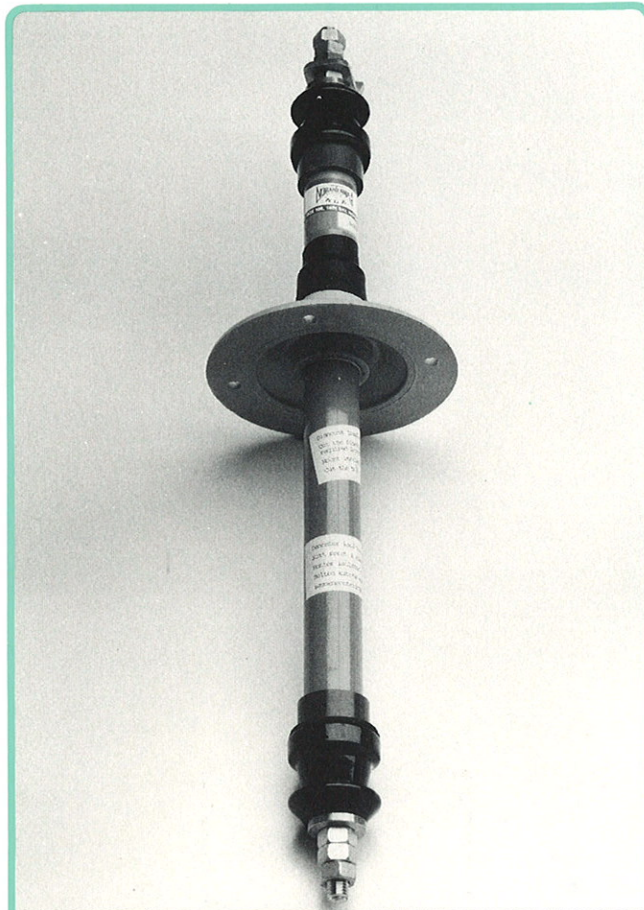
"SAILOR" E62.250 – SG0.2

Antennegennemføring SG0.2.

Anvendelse: Kysttelefoni og kortbølgeanlæg
(ikke 500 kc.).

Aerial Lead-Through SG0.2.

Use: Coast telephony and short wave stations (not 500 kc.).



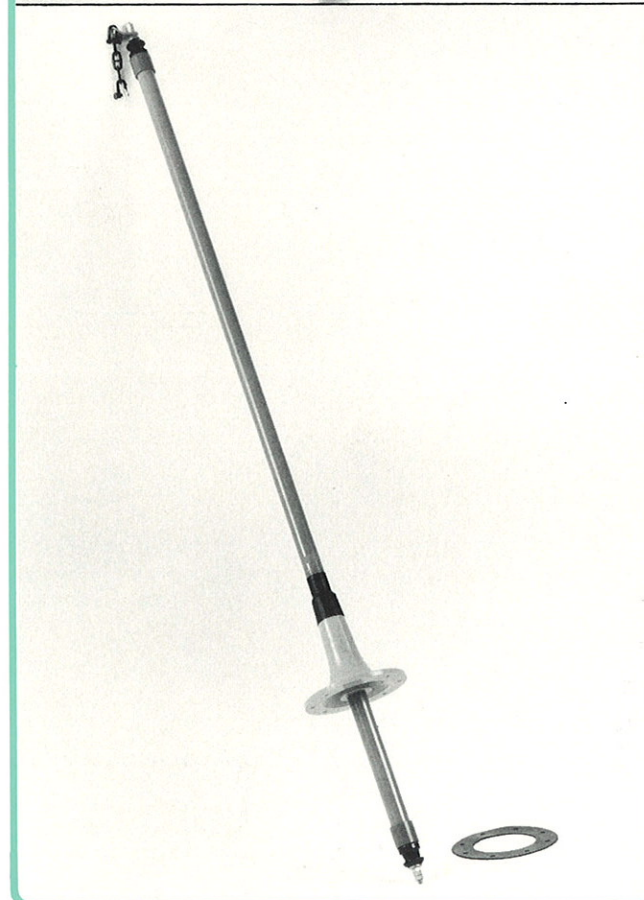
"SAILOR" E62.249 – SG1.8

Antennegennemføring SG1.8.

Anvendelse: Alle typer af kortbølgesendere (ikke 500 kc.).

Aerial Lead-Through SG1.8.

Use: All types of short wave transmitters (not 500 kc.).





"SAILOR" E62.201

Antennegennemføring.

Anvendelse: Til modtagerantennener og mindre sender-udstyr.

Aerial lead-through.

Use: For receiving aerals and low powered transmitting equipment.



"SAILOR" E62.025 - H40

Antennegennemføring delrin.

Anvendelse: Til modtagerantennener.

Aerial lead-through, delrin.

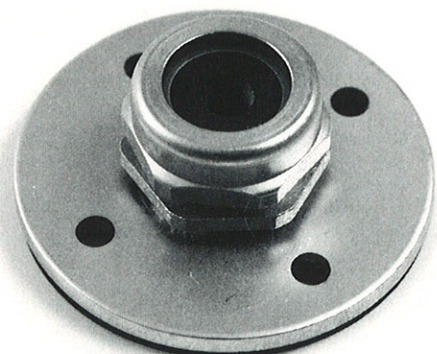
Use: Receiving aerals.



"SAILOR" E62.190

Kabelgennemføring for RG213 - RG8U.

Cable lead-through for RG213 - RG8U.





"SAILOR" E62.025 - H40

Antennegennemføring delrin.

Anvendelse: Til modtagerantennen.

Aerial lead-through, delrin.

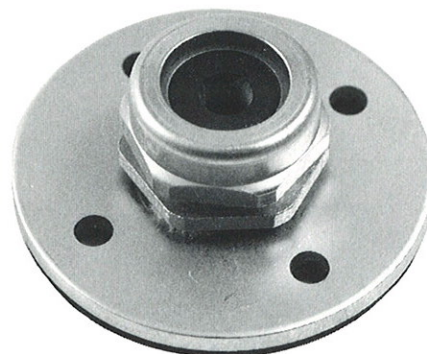
Use: Receiving aërials.



"SAILOR" 700576

Kabelgennemføring for RG213 - RG8U.

Cable lead-through for RG213 - RG8U.





"SAILOR" 700023 - H23

Antennetrådsisolator for modtagerantennener samt mindre senderudstyr (max. 200 W).
Længde: 102 mm.

Aerial wire insulator for receiving aerials and low powered transmitting equipment (max. 200 W).
Length: 102 mm.



"SAILOR" 700022 - H22

Antennetrådsisolator for modtagerantennener samt kyst- og kortbølgesendere.
Længde: 160 mm.

Aerial wire insulator for receiving aerials plus coast and short wave transmitters.
Length: 160 mm.



"SAILOR" E62.261

Gummi antennetrådsisolator for kysttelefoni.

Rubber aerial wire insulator for coast telephony.





"SAILOR" E62.022 - H23

Antennetrådsisolator for modtagerantennener samt mindre senderudstyr (max. 200 W).
Længde: 102 mm.

Aerial wire insulator for receiving aerals and low powered transmitting equipment (max. 200 W).
Length: 102 mm.



"SAILOR" E62.021 - H22

Antennetrådsisolator for modtagerantennener samt kyst- og kortbølgesendere.
Længde: 160 mm.

Aerial wire insulator for receiving aerals plus coast and short wave transmitters.
Length: 160 mm.



"SAILOR" E62.261

Gummi antennetrådsisolator for kysttelefoni.

Rubber aerial wire insulator for coast telephony.





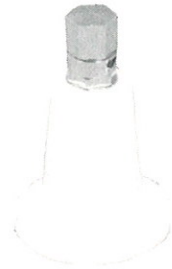
"SAILOR" E62.024 - H30

Stand-off for MF og HF.

Stand-off for indvendig montering i styrehus for at undgå forstyrrende kapacitet på fødeledningen og for at undgå overslag p.g.a. høj spænding i fødeledningen. Isolatoren er lavet af delrin.

Stand-off for MF and HF.

A stand-off for inside mounting in a wheelhouse to avoid parasitic capacities on the feeder and avoid flash-over due to high voltage in the feeder. The insulator is fabricated of delrin.



STAND-OFF INSULATOR ST 500

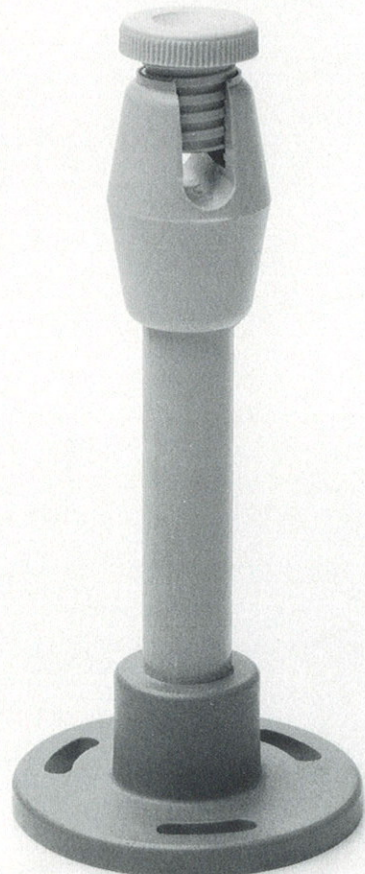
"SAILOR" E62.112

Stand-off er beregnet til kobberør med en diameter på op til 8 mm og må kun anvendes indendørs. Anvendes primært til fixering af senderantennen mellem senderens antennehorn og dækgennemføringen.

The stand-off is made for use in connection with copper tubes with a diameter of up to 8 mm and it must only be used indoors. It is primarily used for fixing of the transmitting aerial between the aerial horn of the transmitter and the deck lead-through insulator.

Specifications:

Height:	135 mm
Slotted holes:	3
Max. HF-voltage:	50 kV
Frequency range:	410 - 25 MHz





"SAILOR" E62.024 - H30

Stand-off for MF og HF.

Stand-off for indvendig montering i styrehus for at undgå forstyrrende kapacitet på fødeledningen og for at undgå overslag p.g.a. høj spænding i fødeledningen. Isolatoren er lavet af delerin.

Stand-off for MF and HF.

A stand-off for inside mounting in a wheelhouse to avoid parasitic capacities on the feeder and avoid flash-over due to high voltage in the feeder.

The insulator is fabricated of delrin.



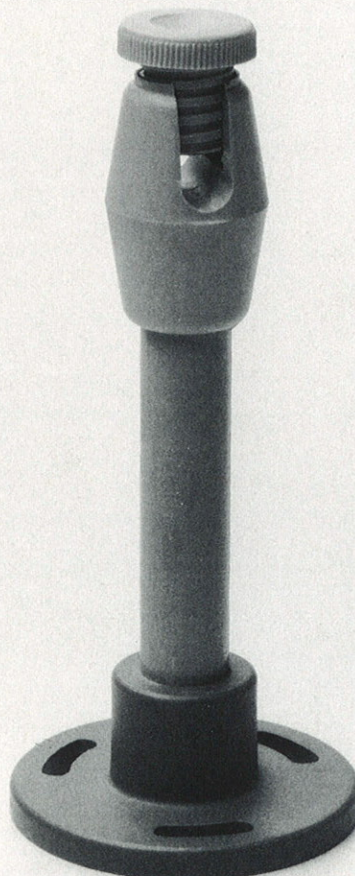
STAND-OFF INSULATOR ST 500

Stand-off er beregnet til kobberør med en diameter på op til 8 mm og må kun anvendes indendørs. Anvendes primært til fixering af senderantennen mellem senderens antennehorn og dækgennemføringen.

The stand-off is made for use in connection with copper tubes with a diameter of up to 8 mm and it must only be used indoors. It is primarily used for fixing of the transmitting aerial between the aerial horn of the transmitter and the deck lead-through insulator.

Specifications:

Height:	135 mm
Slotted holes:	3
Max. HF-voltage:	50 kV
Frequency range:	410 - 25 MHz

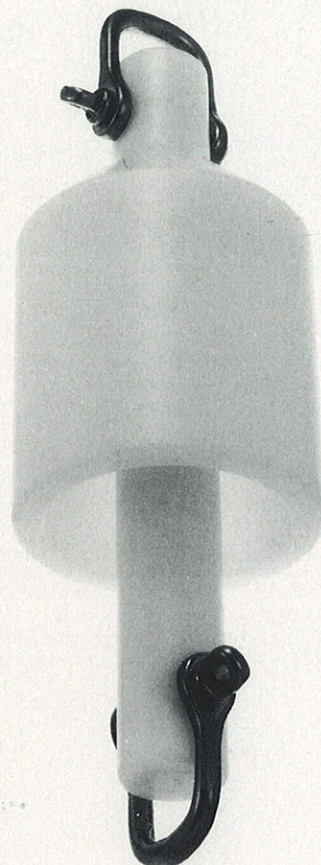




AERIAL INSULATOR RHG 220

Anvendes til antenner, hvor der kan opstå meget høje spændinger, d.v.s. antenner der anvendes til frekvensområdet 400 kHz – 30 MHz. Kan tåle HF-spændinger på op til 50 kV.

To be used in connection with aerials where very high voltages may occur, i.e. aerials used in the frequency range 400 kHz – 30 MHz. Is able to stand HF-voltages of up to 50 kV.



DECK LEAD-THROUGH INSULATOR P501

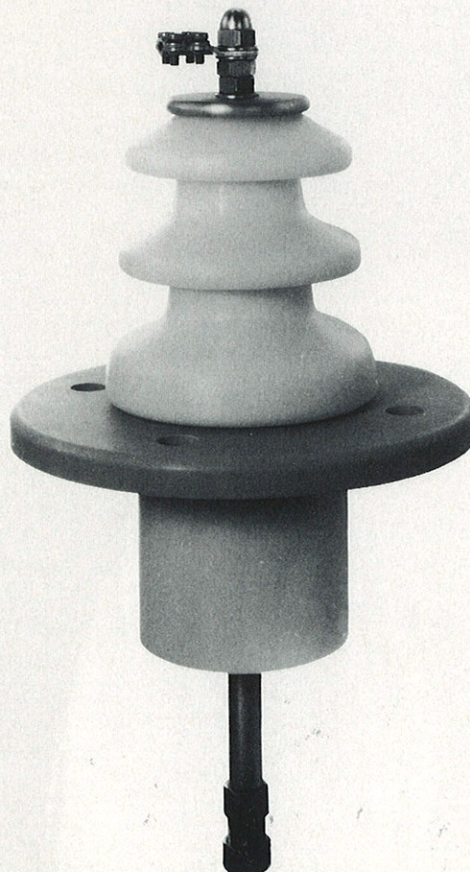
Anvendes til sendere med et frekvensområde fra 400 kHz-30 MHz, d.v.s. SAILOR H1201, T1127L. Kan tåle HF-spændinger på op til 30 kV.

Ved installation skal man være opmærksom på, at denne dækgennemføring kun må anvendes, hvor der ikke er direkte berøringsfare til antenne-feederen.

To be used for transmitters with a frequency range from 400 kHz – 30 MHz, i.e. SAILOR H1201, T1127L. Is able to stand HF-voltages of up to 30 kV.

In connection with installation you must be aware that this deck lead-through insulator must only be used where direct contact with the aerial feeder is impossible.

Height above deck: 160 mm.



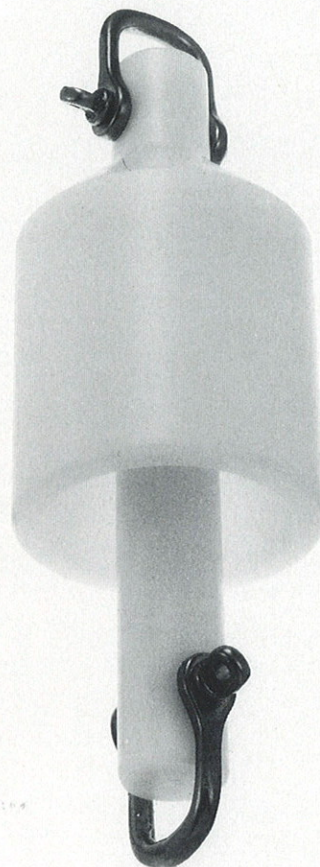


AERIAL INSULATOR RHG 220

"SAILOR" E62.111

Anvendes til antenner, hvor der kan opstå meget høje spændinger, d.v.s. antenner der anvendes til frekvensområdet 400 kHz - 30 MHz. Kan tåle HF-spændinger på op til 50 kV.

To be used in connection with aerials where very high voltages may occur, i.e. aerials used in the frequency range 400 kHz - 30 MHz. Is able to stand HF-voltages of up to 50 kV.



DECK LEAD-THROUGH INSULATOR P502

"SAILOR" E62.110

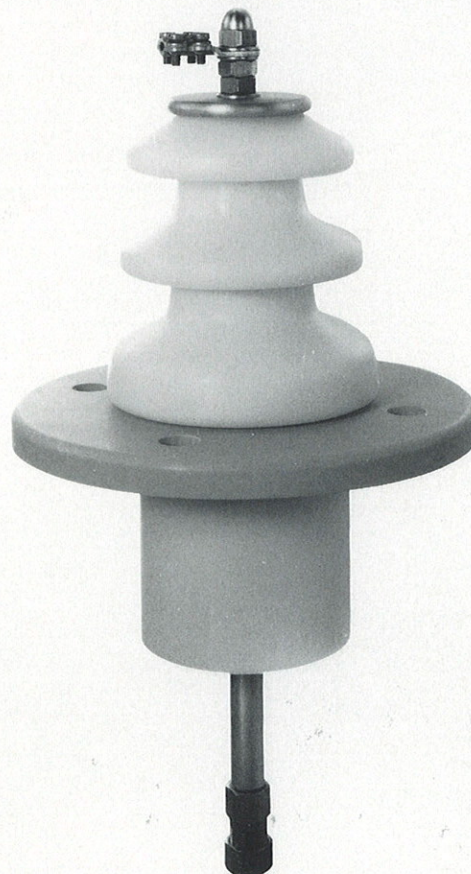
Anvendes til sendere med et frekvensområde fra 400 kHz - 30 MHz, d.v.s. SAILOR H1201, T1127L. Kan tåle HF-spændinger på op til 30 kV.

Ved installation skal man være opmærksom på, at denne dækgennemføring kun må anvendes, hvor der ikke er direkte berøringsfare til antenne-feederen.

To be used for transmitters with a frequency range from 400 kHz - 30 MHz, i.e. SAILOR H1201, T1127L. Is able to stand HF-voltages of up to 30 kV.

In connection with installation you must be aware that this deck lead-through insulator must only be used where direct contact with the aerial feeder is impossible.

Height above deck: 160 mm.





DECK LEAD-THROUGH INSULATORS

STP 2500D

"SAILOR" E62.114

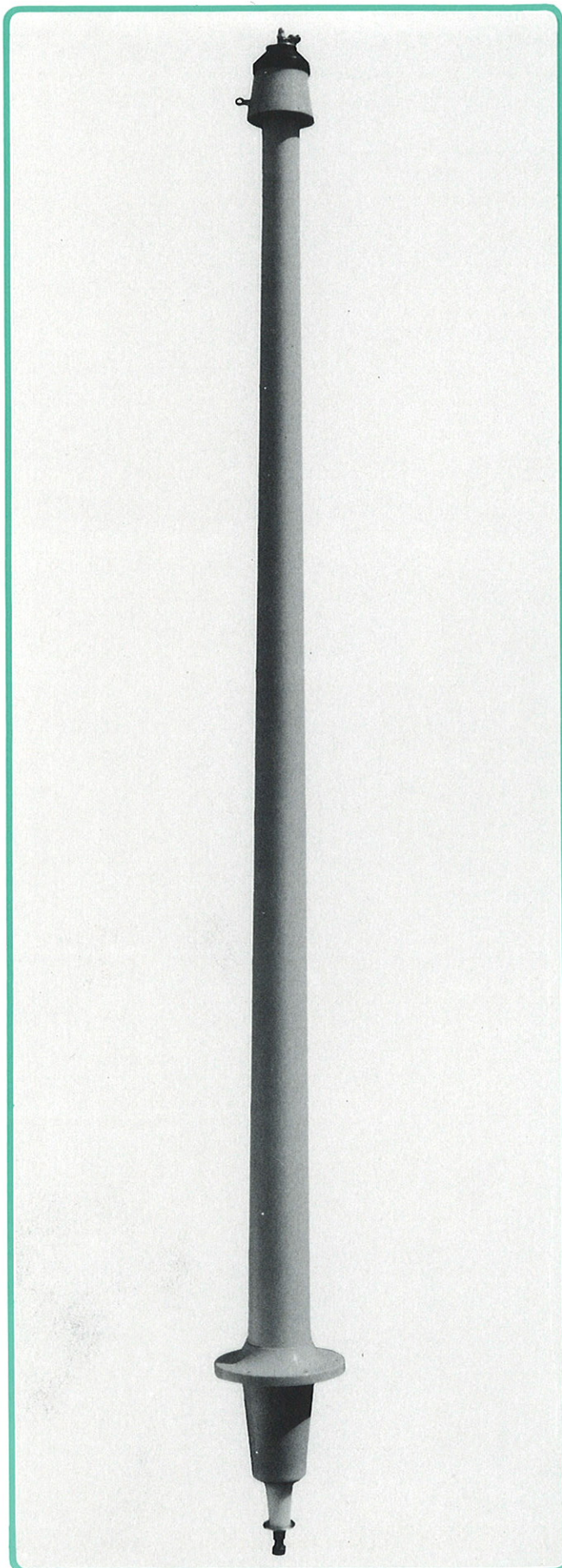
Anvendes til sendere med et frekvensområde fra 400 kHz-30 MHz, d.v.s. SAILOR H1201, T1127L. Kan tåle HF-spændinger på op til 30 kV.

Der er ingen berøringsfare ved anvendelse af disse dækgennemføringer.

To be used for transmitters with a frequency range from 400 kHz-30 MHz, i.e. SAILOR H1201, T1127L. Is able to stand HF-voltages of up to 30 kV.

Contact with these deck lead-through insulators is not dangerous.

Height above deck: 2530 \pm 20 mm.





DECK LEAD-THROUGH INSULATORS STP 2500/STP 3000

Anvendes til sendere med et frekvensområde fra 400 kHz-30 MHz, d.v.s. SAILOR H1201, T1127L. Kan tåle HF-spændinger på op til 30 kV.
Der er ingen berøringsfare ved anvendelse af disse dæks-gennemføringer.

To be used for transmitters with a frequency range from 400 kHz-30 MHz, i.e. SAILOR H1201, T1127L. Is able to stand HF-voltages of up to 30 kV.
Contact with these deck lead-through insulators is not dangerous.

	STP 2500	STP 3000
Height above deck:	2530 +/- 20 mm	2900 +/- 20 mm

